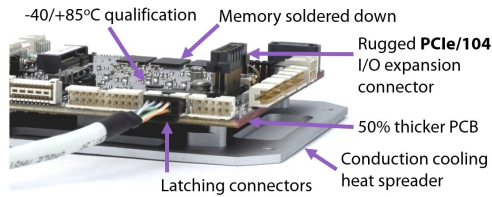


**Diamond Systems** offers a range of single-board computers based on x86 technology designed specifically for the rigors of industrial and military applications. Our SBCs offer numerous features and benefits for embedded applications:

**Rugged** - All boards -40 to +85°C operation. Products feature thicker PCBs and latching I/O connectors. Many products are qualified to MIL-STD-202H shock & vibration.

**COM-based design** - our COM-based SBCs feature performance scalability and extended lifecycle by enabling quick changeover to a new COM if the processor reaches end of life.



	Product	CPU / RAM	Display	I/O	DAQ	Expansion	Size
Jasper		i7-1185GRE 32GB i7-1185G7E 64GB i7-1365URE 64GB Xeon 11865MRE 96GB	2 HDMI 24-bit LVDS	2 GbE 2 USB 3.1 2 USB 2.0 4 RS-232 /422/485	16 16-bit A/D 4 16-bit D/A 22 GPIO	PCIe/104 2x Minicard	3.775 x 3.75" 96 x 90mm
Gemini		i7-1185GRE 32GB i7-1185G7E 64GB	2 HDMI 24-bit LVDS	2 GbE 2 USB 3.0 4 USB 2.0 4 RS-232/ 422/485	8 GPIO	PCI/104-Express (PCI + PCIe) Minicard	4.0 x 4.0" 102 x 102mm
Saturn		x7-E3950 4GB	2 HDMI 24-bit LVDS	2 GbE 2 USB 3.0 2 USB 2.0 3 COM	16 16-bit A/D 4 16-bit D/A 22 GPIO	PCIe/104 Minicard	4.8 x 4.5" 122 x 114mm
Athena IV		x7-E3950 4GB x7433RE 16GB <b>Performance Upgrade!</b>	VGA 24-bit LVDS	2 GbE 1 USB 3.0 4 USB 2.0 4 RS-232 /422/485	16 16-bit A/D 4 12-bit D/A 24 GPIO	PC/104	4.5 x 4.2" 114 x 106mm
Aries		BT E3845 4GB	VGA 24-bit LVDS	2 GbE 1 USB 3.0 3 USB 2.0 4 RS-232 /422/485	16 16-bit A/D 4 16-bit D/A 22 GPIO	PC/104-Plus (PCI + ISA) Minicard	4.0 x 4.5" 102 x 114mm
Zeta		x7-E3950 4GB x7433RE 16GB <b>Performance Upgrade!</b>	VGA 24-bit LVDS	2 GbE 1 USB 3.0 4 USB 2.0 4 RS-232 /422/485	16 16-bit A/D 4 16-bit D/A 27 GPIO	Minicard Daughterboard connector with PCIe	2.2 x 3.3" 55 x 84mm <b>Tiny!</b>
Samson		BT E3845 4GB	VGA 24-bit LVDS	2x GbE 1x USB 3.0 2x USB 2.0 4x COM	8 GPIO	PC/104 Minicard	3.775 x 3.55" 96 x 90mm PC/104

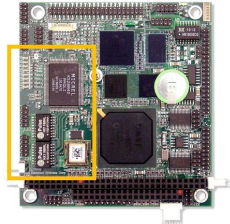


## Custom Solutions

Custom Ethernet switch design and manufacturing services are available. Our switch modules speed up the design and delivery of custom switch solutions by significantly reducing the development effort and risk.

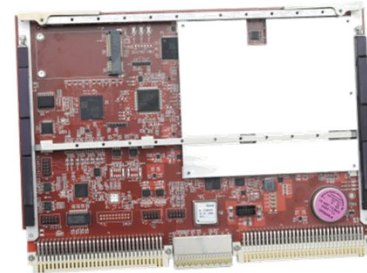
### Custom PC/104 SBC

Diamond designed this PC/104 low-power SBC with an integrated Ethernet switch to control lighting in smart buildings.



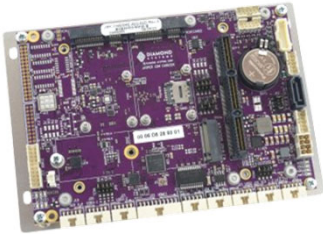
### Custom Rugged VME SBC

Diamond designed this VME form factor SBC with CAN and MIL-STD-1553 for a military ground vehicle monitoring system to replace another vendor's product that had become obsolete.



***Discover the full breadth of Diamond's rugged and I/O-rich embedded computing product line!***

## Embedded Computer Boards



SBCs range from low-end 486 processors up to Core i7 and Xeon. All products are rated -40 to 85°C.

- COM-based designs provide performance scalability and extended lifetime.
- Many SBCs include an on-board professional quality data acquisition system.

## Ethernet Switches



Ethernet switches range from 8 to 28 ports with a combination of 1G copper and 10G SFP+ sockets. Embedded management software with web and serial command interfaces is included on all products.

- Boards provide a complete solution on a single board.
- Modules provide the core technology and embedded software to take the risk and complexity out of designing a custom Ethernet switch solution.

## NVIDIA® Jetson



NVIDIA® Jetson solutions support the latest generation of Jetson modules and related technologies.

- Carrier boards feature built-in I/O and expansion sockets
- Integrated assemblies contain the Jetson module installed and programmed along with a thermal solution
- Commercial- and military-grade systems are ready-to-deploy complete solutions

## Rugged Systems



Rugged computers and Ethernet switches provide the ultimate in ruggedness for harsh environment applications. SBCs feature extreme configuration flexibility with COM-based design for performance scalability and extended lifetime plus a multitude of sockets and built-in connectors for easy I/O expansion.